

Yatesbury Avenue, Castle Vale, Birmingham, B35 6LB

School Reopening: Key Information for Parents of Year 6 Children

Dear Parents

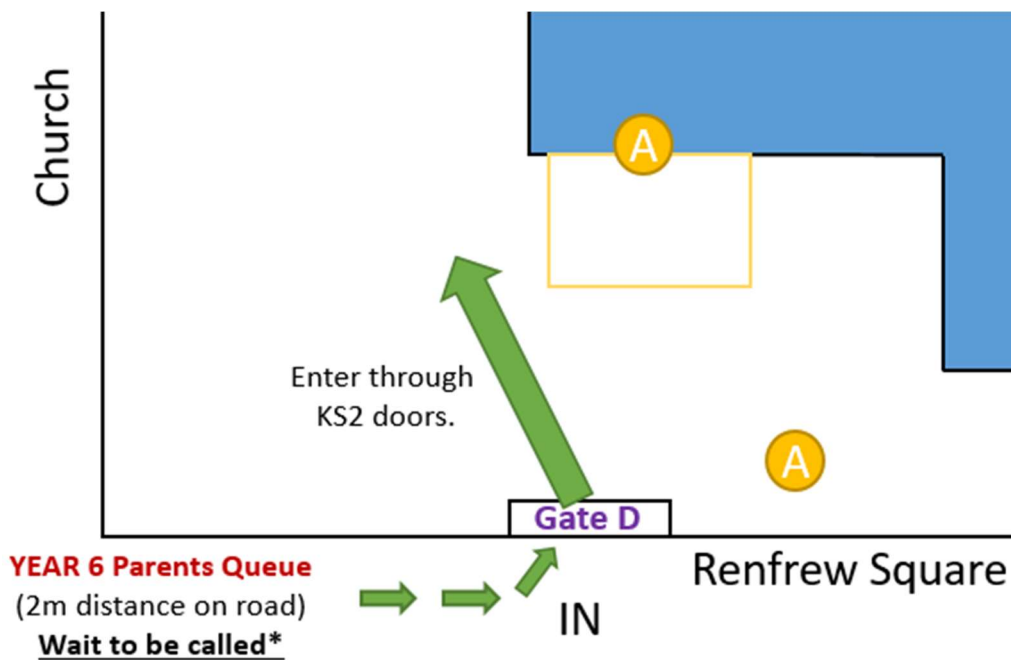
School will reopen on **Tuesday 9th June to children in our Year 6 class**. We have been busy planning for the children's return, and need to share some important information with you. **All the decisions we have had to make are the result of government guidance**. We wish to give you as much information as we can in order for you to be able to make an informed decision as to whether you will be sending your child to school.

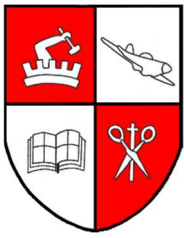
Hours we will be open:

As explained in a previous letter, the times will be different as we have to move other year groups on and off site without groups of children and parents crossing over. In order to do this, drop off will be at 9.30am and collection will be 2.30pm. **School will be closed to most pupils on Fridays**, for deep cleaning and staff planning time. We will remain open to children whose parents are keyworkers or classed as vulnerable.

Drop off:

Parents will be asked to queue **outside the gate (Gate D) on Renfrew Square at 9.30am**. Parents should maintain a **strict 2m distance** from each other and use the signs on the fence to help. A member of staff will call you through and your child can walk to the KS2 doors and drop your child off. If you turn up late we cannot guarantee entry as we have other year groups to safely get into school. **Year 6 children cannot join the queue on their own – you must wait with your child outside the school premises.**





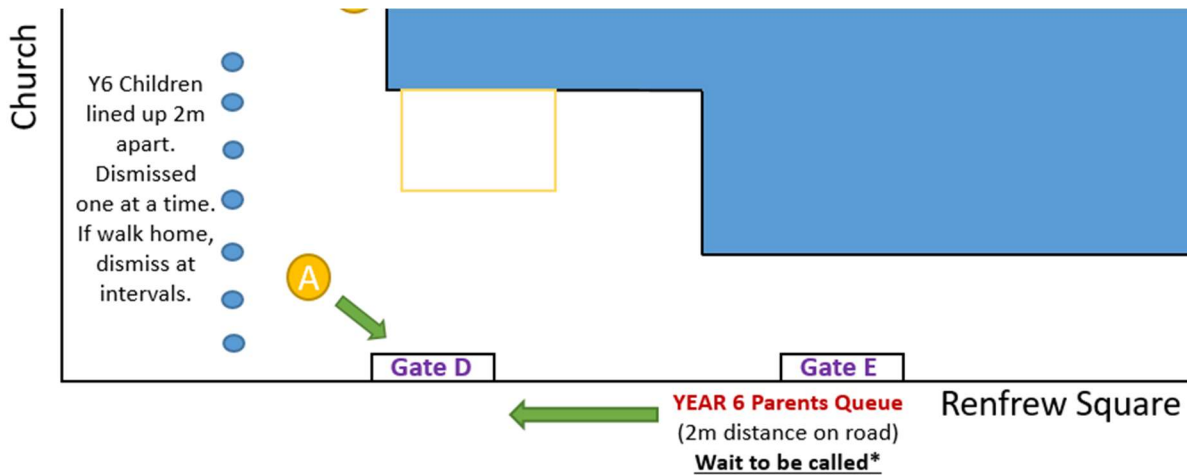
Archdiocese of Birmingham
St. Gerard's Catholic Primary School and Nursery
Headteacher: Mr A Crehan



Yatesbury Avenue, Castle Vale, Birmingham, B35 6LB

Collection:

Parents will be asked to queue **outside the gate (Gate D) on Renfrew Square at 2.30pm**. Parents should maintain a **strict 2m distance** from each other and use the signs on the fence to help. A member of staff will call your child when you reach the front of the queue.



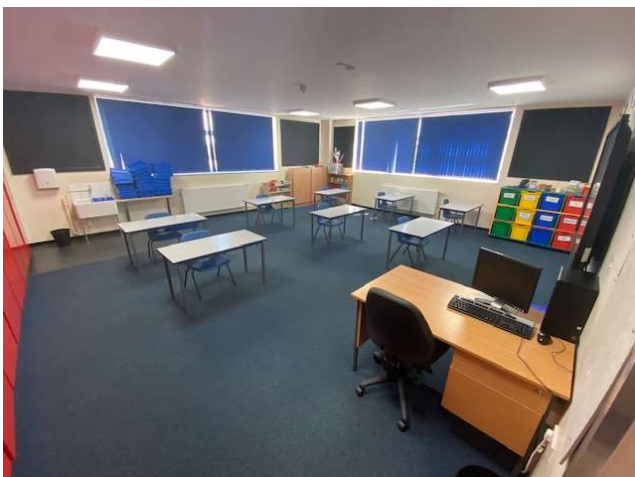
We recommend that your **child is collected by an adult** so that they maintain social distancing outside of the gates. If it is apparent your child is not following the social distancing guidance (E.g. closely walking home with friends), their place in school could be jeopardised.

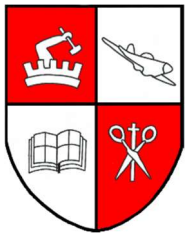
Bubbles:

Your child will be placed into a bubble. This may not be with their class teacher or friends. We will choose the pupils based on the way we feel we can help them best educationally. We will let you know your bubble when you confirm your place. This will be a small group, up to a maximum of 10 children, and will contain up to 2 adults. Your child will remain in that bubble for their entire time in school. They will work together, have break times together and will not mix with other bubbles.

Social distancing:

It is against children's nature to socially distance. However, for their safety and ours, we will be trying our hardest to ensure the children avoid contact as much as possible. In Year 6, we hope they will have a greater understanding of keeping their distance. We have made changes to our classrooms so that they have as much space as possible.





Archdiocese of Birmingham
St. Gerard's Catholic Primary School and Nursery
Headteacher: Mr A Crehan



Yatesbury Avenue, Castle Vale, Birmingham, B35 6LB

As you can see, the desks will remain separate and children will sit on their own to maintain a social distance. Our lovely displays were sadly taken down during our deep clean of the school and will remain so to discourage children touching them. Children will not be allowed to leave their seat without permission.

Behaviour:

We have had to make some changes to our behaviour policy. As your child has to stay in their bubble, if they persistently misbehave, or purposely cough, spit or break social distance, we will ask you to come and collect your child. If they continue to do this having already been sent home, they will lose their place at school for this period of time. I am confident that this will not happen at St Gerard's.

Uniform:

We ask that your child wears their summer uniform or their PE kit each day. The emphasis will be on good hygiene and reducing the risk of passing on germs to others, so it is important that they **wear clean clothes each day**.

Lunches:

We will not be providing hot dinners and they will not be able to be purchased from the school. **All children will need a packed lunch**. Children eligible for Free School Meals will be provided with a cold packed lunch from school.

First Aid/Medical issues:

If your child becomes unwell or hurts themselves they will be looked after as we would normally. We have arrangements in school for this, but the difference will be that those administering first aid will be wearing PPE, particularly if your child becomes unwell. You could prepare your child for this, by showing them what the masks look like, and talking to them about why adults will have them on.

Toilets:

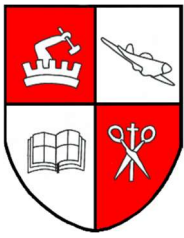
Your child will be able to go to the toilet when they need to, as they normally would. We will be teaching the children how to wash their hands properly, and we will ask them to let us know when they are going to the toilet, so that an adult can be ready to ensure they wash their hands correctly afterwards.

Bringing items to and from school:

The only items your child will be allowed to bring into school is a water bottle and coat if required. Your child will not be allowed to take anything away from the school site, this will include reading books and homework.

Curriculum:

Your child will not be following the Statutory National Curriculum for their age. We will spend a lot of time learning about how to stay safe in a pandemic, and why life has changed so much over the past few months. Children will pray together and we will talk about our feelings and worries at this time. There will also be opportunities for some English and Mathematics. Home learning will still be available on our website.



Archdiocese of Birmingham
St. Gerard's Catholic Primary School and Nursery
Headteacher: Mr A Crehan



Yatesbury Avenue, Castle Vale, Birmingham, B35 6LB

Leaving school:

We are sad to see our children leave us in these circumstances. However, safety is our number one priority. There will be no Leavers' Mass or assembly this year. Children will not be allowed to have their shirts signed nor will we be able to meet together as a whole class within school time, due to the current government guidance.

Covid-19 Symptoms:

If anyone becomes unwell with a new, continuous cough or a high temperature, or has a loss of, or change in, their normal sense of taste or smell, they **SHOULD NOT COME INTO SCHOOL**. If this happens during the school day they **WILL BE SENT HOME**, and the entire household must self-isolate for 14 days. You should then arrange to have a test to see if your child has COVID-19. If they have a negative result, you must show us this before your child can return to school. If they have a positive result you should notify us as soon as possible and then the entire bubble will be sent home to isolate. **Parents of children within the bubble will be notified if we send any child home with symptoms. The government guidance advises us that they can continue to come to school whilst we wait for a result.** We are not medical professionals and cannot determine the difference between these symptoms and other illnesses. Any symptom from above will be treated as potentially COVID-19 until proven otherwise by a negative test or after a 14 day isolation period.

Parent Survey:

After reading this document you should fill in the survey to 'book' your child's place at school. You need to indicate either 'Yes' or 'No' to confirm your place for the following week. If you answer 'Yes' on the survey you will have your place for the entire term. If you enter 'No', you will not be able to send your child into school for the following week. **You cannot send your child to school without prior arrangement. Any child without a confirmed place will not be permitted to enter the school that week.** This survey process will continue weekly with the same options. If you do not respond, we will presume you are not taking your place.

You must feel comfortable with your decision, and by agreeing to send your child to school you will need to be supportive of these new measures. If you still have questions about the return to school, please see the 'Frequently Asked Questions' letter. **Everything we do is directed by the government**, these measures are designed to keep our whole community safe. We will support your decision either way, knowing you are doing what you feel is right for your child and your whole family.

I look forward to your response.

A Crehan
Headteacher